

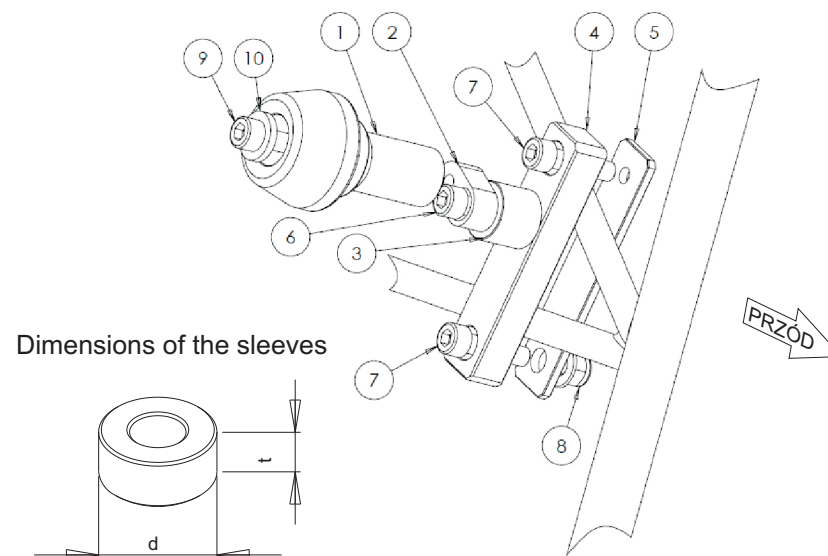
Protective sliders HONDA CBR 250

Year of production: '11-
Product code: 10123



Assembly position
(both sides)

Assembly scheme (both sides)



No	Part	Left side	Right side
1	Slider		
2	Metal Bar		
3	Sleeve	d=30 mm, t=25 mm	d=30 mm, t=25 mm
4	Alu metal Bar		
5	Steel Metal bar		
6	Screw	M10, l = 50 mm	M10, l = 50 mm
7	Main screw	M10, dl = 40 mm	M10, dl = 40 mm
8	Nut		
9	Screw	M10	M10
10	Washer	10	10

Assembly instructions

1. The set is to be mounted on two frame tubes with the aluminium metal bar (#4) and steel metal bar (#5).
2. The set is to be put in the position that enables the slider (#1) to be put through the hole in the original fairing and the metal bar (#2) is to be set horizontal towards the back of the motorcycle.
3. The tubes of the frame can be covered by foil in order to avoid any scratches.

We suggest to use the threadlocker to make sure that the screws do not get loose.

This product is entirely produced in the European Union. This product is a professional accessory to be used on the race track. Renner LTD takes no responsibility for any damages occurred despite of using protective accessories. For more information go to www.renner-moto.com